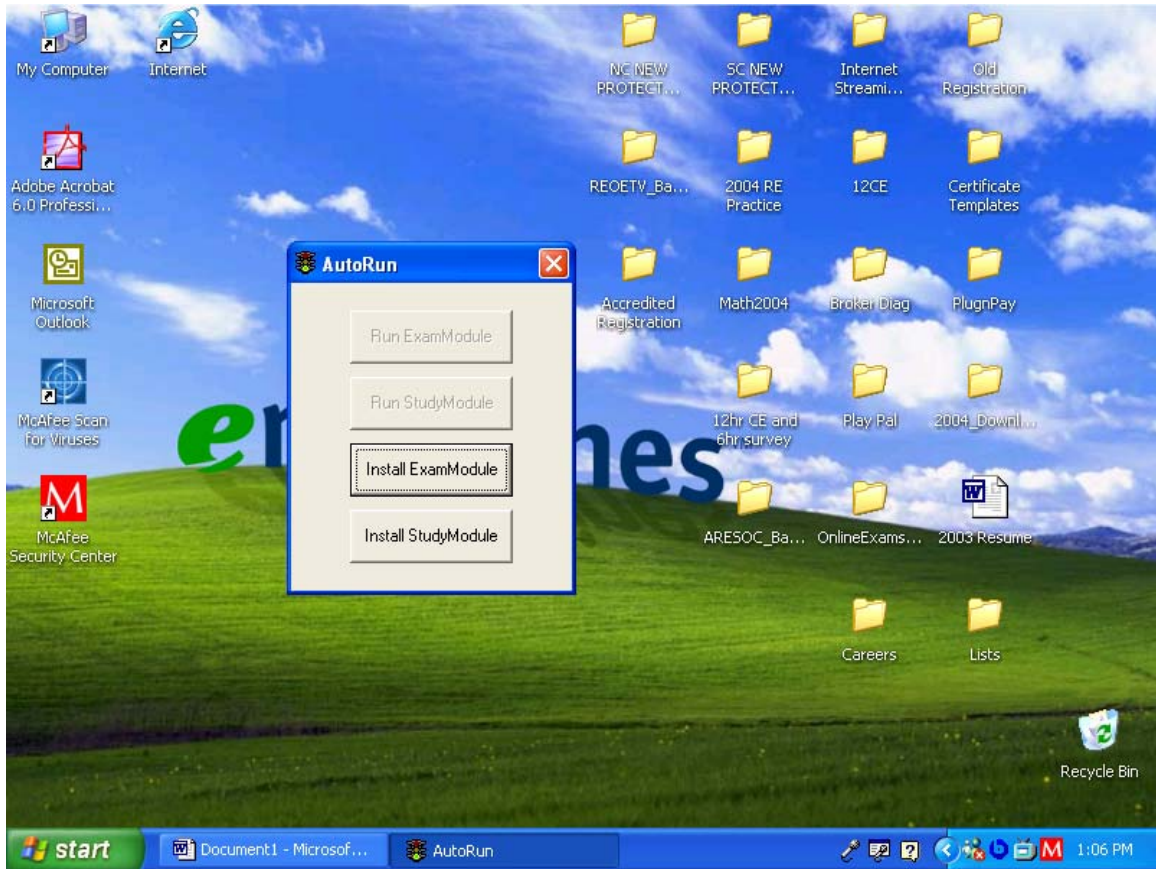


When Installing CD in CD rom you may see this from McAfee- Allow this





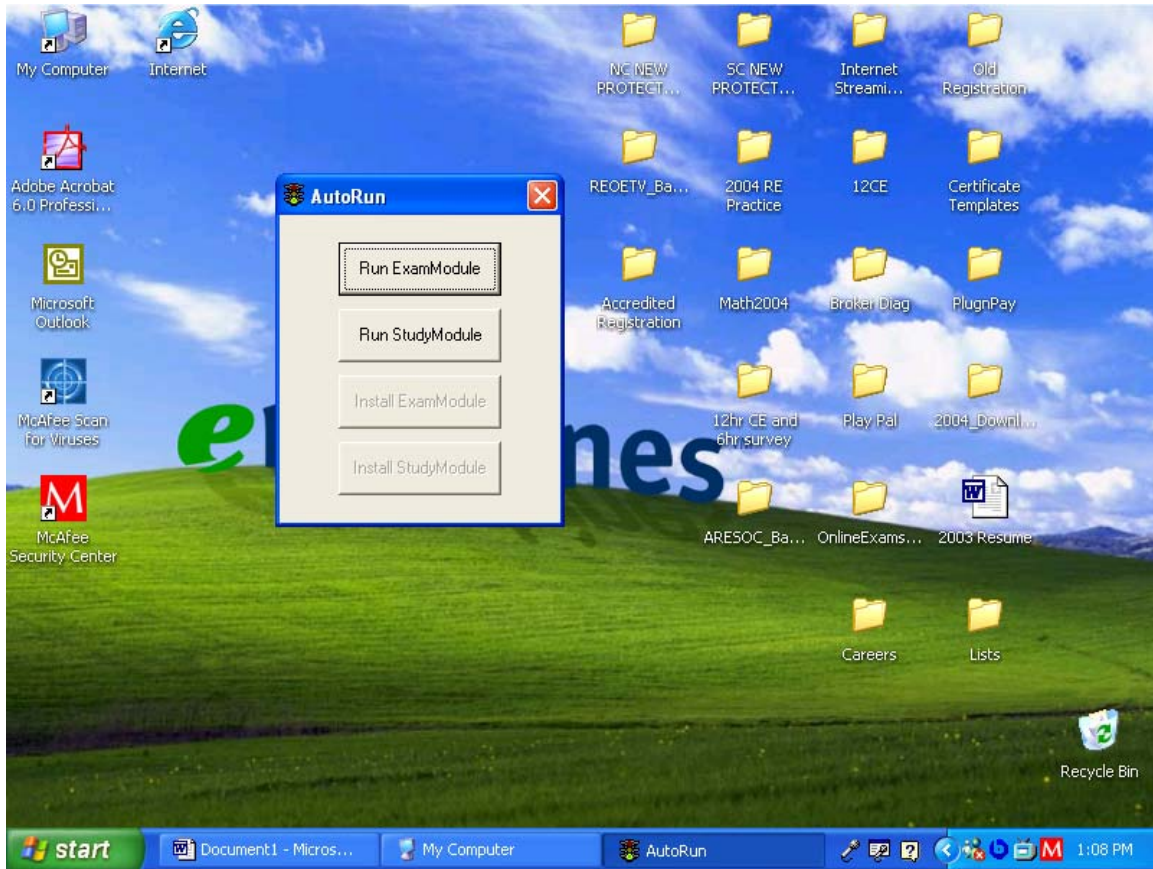
After you allow you will see the Autorun Buttons:

Select install Study Module 1<sup>st</sup>.

Always keep the newer files.

Then Select Install Exam Module next.

Always keep the newer files.



Now you are ready to use Mr.studymodule and exammodule

The CD must be in the CD rom to use this software.

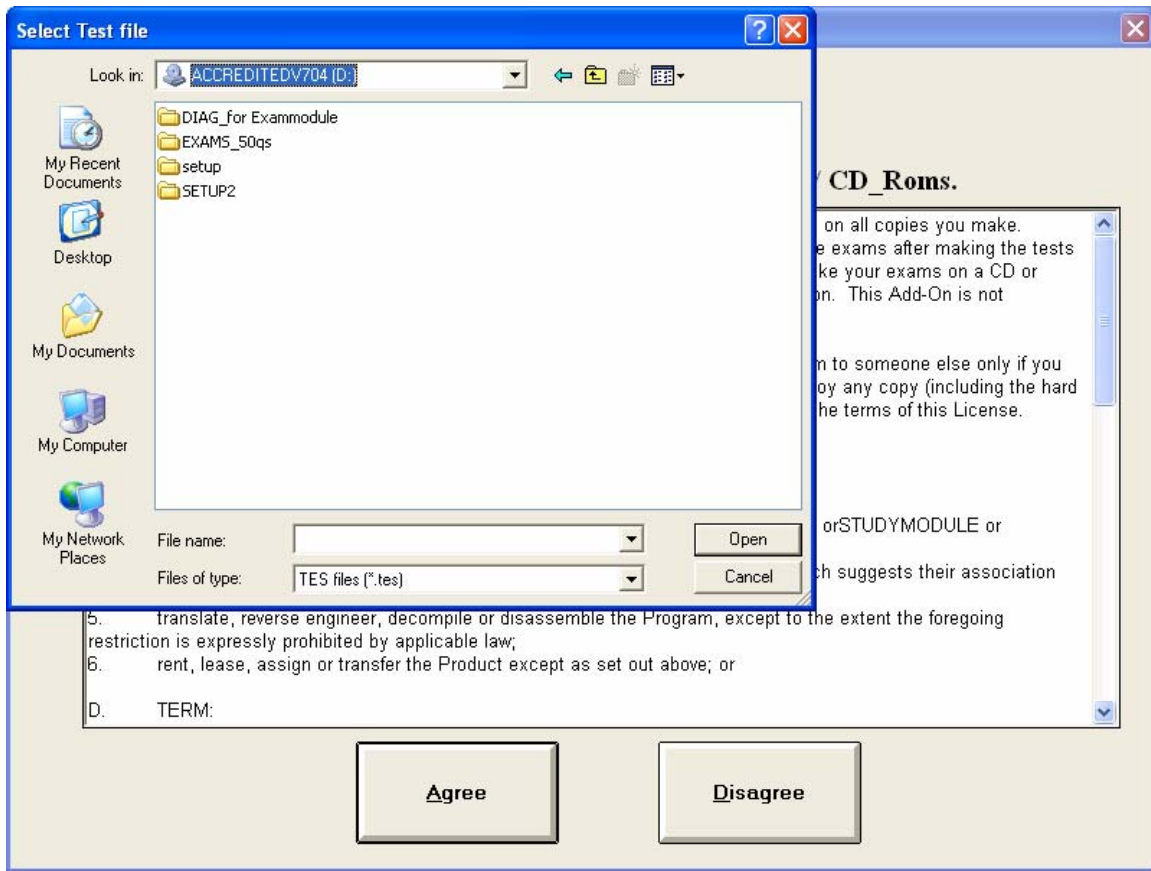
Select Mr Study Module to Study questions Only

Click on AGREE

Now you will see a open test window

Use the pull down down menu to assign the CD-Rom (you will see foldersP

(Select the **Exams\_50q's** Folder for this operation only)



You will see many files ( these are your practice exams) set up in 50 question sets)

Select a file then select Open.



**Select Test file**

Look in: EXAMS\_50qs

AREA1A1.TES	AREA3B1.TES	AREA5A2.TES	AREA7A2.TES
AREA1A2.TES	AREA3B2.TES	AREA5A3.TES	AREA7A3.TES
AREA1A3.TES	AREA3B3.TES	AREA5B1.TES	AREA7B.TES
AREA1B1.TES	AREA3B4.TES	AREA5B2.TES	RECENT1.TES
AREA1B2.TES	AREA4A1.TES	AREA5B3.TES	RECENT2.TES
AREA1B3.TES	AREA4B1.TES	AREA5C1.TES	RECENT3.TES
AREA1B4.TES	AREA4B2.TES	AREA5C2.TES	RECENT4.TES
AREA1C1.TES	AREA4B3.TES	AREA5C3.TES	RECENT5.TES
AREA1C2.TES	AREA4B4.TES	AREA6A1.TES	RECENT6.TES
AREA1C3.TES	AREA4C1.TES	AREA6A2.TES	RECENT7.TES
AREA1C4.TES	AREA4C2.TES	AREA6A3.TES	RECENT8.TES
AREA2A.TES	AREA4C3.TES	AREA6A4.TES	RECENT9.TES
AREA2B.TES	AREA4C4.TES	AREA6A5.TES	REMATH.TES
AREA3A1.TES	AREA4D.TES	AREA6B1.TES	REMATHA.TES
AREA3A2.TES	AREA5A1.TES	AREA7A1.TES	

File name:  Open

Files of type: TES files (\*.tes) Cancel

**CD\_Roms.**

on all copies you make.  
e exams after making the tests  
ke your exams on a CD or  
on. This Add-On is not

m to someone else only if you  
oy any copy (including the hard  
he terms of this License.

orSTUDYMODULE or  
ch suggests their association

5. translate, reverse engineer, decompile or disassemble the Program, except to the extent the foregoing restriction is expressly prohibited by applicable law;  
6. rent, lease, assign or transfer the Product except as set out above; or

D. TERM:

**Agree** **Disagree**

**Test Question**

Print Help

Question # 1 of 50 00:00:04

All of the following are estates in real property except:

Pick the correct answer

A	A. leasehold
B	B. trust deed
C	C. reversion
D	D. remainder

Skip

Exit

start Document1 ... My Computer AutoRun Test Question 1:12 PM

You are ready to start studying.

The screenshot shows a 'Test Question' window with a feedback pop-up. The main window title is 'Test Question' and it has 'Print' and 'Help' buttons. It displays 'Question # 1 of 50' and the question: 'Another name for an estate of inheritance'. Below the question is a 'Pick the correct answer' section with four options: A. probate estate, B. fee simple defeasible, C. estate in fee, and D. estate in sufferance. A feedback pop-up window titled 'Mr. StudyModule says, Correct!' is overlaid on the right side. It features a large orange smiley face icon and a text box containing the explanation for option C: 'A fee estate is also known as an estate in fee, fee, fee estate, and estate of inheritance. It is freely transferable and is the greatest interest a person can have in real property. It is a feehold estate; therefore, it is indefinite in duration. It is not necessarily free of encumbrances.' The pop-up has 'OK' and 'Exit' buttons.

When answering you will receive instant feed back.

(The ExamModule is Only a TEST software and will grade you at the end.

(Use only the FOLDER CALLED **DIAG\_forexammodule** for this Module) **DOES NOT WORK IN STUDY MODULE)**